



DeForest

Area School District

Building Our Future Together

Construction Update | January 31, 2017

[Our Progress](#) | [Calendar of Events](#) | [Questions/Comments](#)

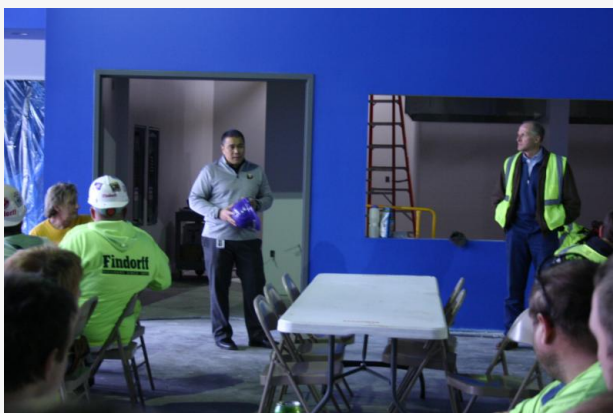
Below are updates for Eagle Point Elementary School and Windsor Elementary School as we move through the phases of construction and grand openings!



Eagle Point Elementary School

January 20th update from Findorff Project Manager, Aaron Zutz

Wind, rain, or shine, Eagle Point continues to make notable progress! Many doors with glass have been installed throughout the school. The classroom flooring has been installed, and the cafeteria paint is finished! Many finishes are going to be taking place throughout the school, including more cubbies, flooring, and casework!



On Friday, January 20, DASD Superintendent Eric Runez joined Findorff & Sons president Mike Dillis in thanking the construction crew for their work on Eagle Point Elementary School.

Findorff hosted the recognition luncheon to show appreciation to their employees and commend them on the progress of the project.


More updates, including photos and what's coming up in the weeks ahead.

EXECUTIVE SUMMARY REPORT
Eagle Point Elementary
January 20th, 2017

Doors, Windows, and More!
Wind, rain, or snow, Eagle Point Elementary continues to make notable progress! Doors have been installed throughout the building, new vinyl glass that help give the school an open feel. Flooring has been installed in some of the classrooms, and the cafeteria panel has been finished. Carrying up, many finishes are taking place throughout the school, including new cabinets.

Rooming and classes!

The Park Rooms	Coming Up in the Weeks Ahead
• Door Install	• Flooring
• MEP Finishes	• Cabinets
• Acoustic	• Calling The Carriers
• Calling The	• Flooring Install



Did you know? There have been many efforts to make Eagle Point an open learning space. The large windows in the classroom and cafeteria, the doors with windows in the center, and the columns (rather than walls) in the cafeteria all contribute to the welcoming, open, atmosphere.

Quantiflex Construction, LLC
10000 S. 100th St., Suite 100, Kent, WA 98032
Phone: 206.835.1234 | Fax: 206.835.1235 | Email: info@quantiflex.com

Findorff

"Did you know?"

There have been so many efforts to make Eagle Point an open learning space. The large windows in the classroom and cafeteria, the doors with windows in the center, and the columns (rather than walls) in the cafeteria all contribute to the welcoming, open, atmosphere.



Windsor Elementary School

January 27th update from Findorff Project Manager, Sara Michalski

We are crossing the phase 1 finish line at Windsor Elementary! Everything has come together. Teachers have some supplies being moved in. The cafeteria has made great headway, with flooring installed, acoustic ceiling tiles set, and wall panels up. Classrooms are ready for new furniture, with delivery starting Feb. 6th, and bathrooms and support areas are finished. The gym flooring is the focus for next week, along with minor touch-ups around the school. You know they are ready when signage is going up outside of each room and the main entrance school name lettering is up and ready to welcome students!

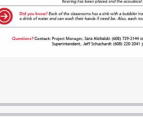


More updates, including photos and what's coming up in the weeks ahead.

EXECUTIVE SUMMARY REPORT
Windsor Elementary School
January 27th, 2017

Rooming finished!
We are crossing the phase 1 finish line at Windsor Elementary! Everything has come together. Teachers have some supplies being moved in. The cafeteria has made great headway, with flooring installed, acoustic ceiling tiles set, and wall panels up. Classrooms are ready for new furniture, delivery starting Feb. 6th, and bathrooms and support areas are finished. The gym flooring is our focus for next week, along with minor touch-ups around the school. You know we are ready when signage is going up outside of each room and the main entrance school lettering is up and ready to welcome students.

The Park Rooms

Coming Up in the Weeks Ahead	
• Cabinet Install	• Storage and Restroom area
• Acoustic Ceiling Tile Install	• Finish
• MEP Finishes	• Furniture Delivery in the Cafeteria
• Floor Finish in the Cafeteria	• Gym Flooring
• Finish in Area E	• Finish in Area E
• Cabinets Acoustic Wall Panels	• Owner occupancy



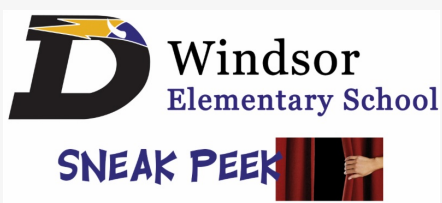
Did you know? Each of the classrooms has a sink with a bubbler installed. This way kids don't have to leave the room to get a drink of water and can wash their hands if need be. Also, each room has casework for additional storage for teachers.

Quantiflex Construction, LLC
10000 S. 100th St., Suite 100, Kent, WA 98032
Phone: 206.835.1234 | Fax: 206.835.1235 | Email: info@quantiflex.com

Findorff

"Did you know?"

Each of the classrooms has a sink with a bubbler installed. This way kids don't have to leave the room to get a drink of water and can wash their hands if need be. Also, each room has casework for additional storage for teachers.



On Thursday, February 23, Windsor Elementary School and Findorff & Sons will host a "Sneak Peek" of the new addition for WES parents/guardians during Parent-Teacher Conferences. Information about

bus and parent drop off procedures will be explained, and families will be invited to take a peek at classrooms, the gym, and the new office. Information about the phase 2 renovations, which are scheduled for March through August, will also be shared.

[DASD Construction website](#)

QUESTIONS OR COMMENTS?

Feel free to ask a question or leave a comment. If you would like a direct response, please leave your contact information.

FEEDBACK

If you would like to be removed from this email group, please send a message to dasdnews@deforestschoools.org.

DeForest Area School District
520 E. Holum Street, DeForest, WI 53532
(608) 842-6500
www.DASDconstruction.org

Follow Us:



The DeForest Area School District does not discriminate on the basis of sex, race, religion, national origin, ancestry, creed, pregnancy, marital or parental status, sexual orientation, or physical, mental, emotional or learning disability or handicap in employment and its educational programs and activities.