



DeForest

Area School District

Building Our Future Together

Construction Update | May 3, 2016

[Our Progress](#) | [Calendar of Events](#) | [Questions/Comments](#)

Thank you for signing up to receive the **DASD Construction Updates!** You will continue to receive periodic email updates as we move through the phases of construction and grand openings!

OUR PROGRESS

Click on the image thumbnail to open an Executive Summary Report for each project.



DeForest Area High School STEM

Leave your mark!

Join us for a celebration of the DAHS STEM project on **Tuesday, May 17, 5:30 pm** at the construction site (circle drive on west side of school). Rather than a traditional ground breaking, we will be celebrating the start of this project with a beam signing. Join school staff and students, parents, government leaders, and local business representatives for this ceremony, which will include an opportunity for everyone to sign a steel beam that will be used in the construction of the building project.

High School Project Update:

Foundations for the High School STEM project are nearly complete.

~ Findorff Project Manager Aaron Zutz



"Did you know?"

(regular feature at the bottom of each report)

There will be approximately 27,000 CMU (Cement Masonry Unit) blocks used to construct the walls of the new High School STEM addition. The blocks are held together with mortar between them, and in structural walls select cores in the block are filled with grout and steel to further reinforce the walls.



Windsor Elementary School

We are one month into construction, and the site clearing and excavating are going smoothly.

~ Findorff Project Manager Sara Michalski



"Did you know?"

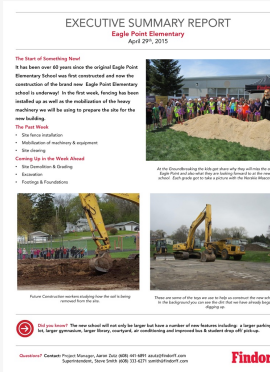
There is a toy excavator that has a price tag of \$4,500. Usually toy excavators are made of plastic but this has a powder-coated steel body, six motors, & weighs about 60 pounds. It is remote controllable and runs on four NiMH rechargeable batteries. It is very convenient if you're planning to build a sand castle or dig up some soil. If you plan to buy your kid one, the toy is very safe but still requires adult supervision to prevent any sort of injury.



Eagle Point Elementary School

It's been over 60 years since the original Eagle Point Elementary School was first constructed and now the construction of the brand new Eagle Point Elementary School is underway!"

~ Findorff Project Manager Aaron Zutz



"Did you know?"

The new school will not only be larger but have a number of new features including: a larger parking lot, larger gymnasium, larger library, courtyard, air conditioning and improved bus & student drop off/ pick-up.

[DASD Construction website](#)

May 17 | 5:30 pm

Celebration of DAHS STEM project

Sign the beam

at DAHS circle drive, west side of school



QUESTIONS OR COMMENTS?

Feel free to ask a question or leave a comment. If you would like a direct response, please leave your contact information.

FEEDBACK

If you would like to be removed from this email group, please send a message to dasdnews@deforestschoools.org.

DeForest Area School District

520 E. Holum Street, DeForest, WI 53532

(608) 842-6500

www.DASDconstruction.org

Follow Us:



The DeForest Area School District does not discriminate on the basis of sex, race, religion, national origin, ancestry, creed, pregnancy, marital or parental status, sexual orientation, or physical, mental, emotional or learning disability or handicap in employment and its educational programs and activities.